

SYDNEY



Being Australia's largest capital city, there is no end of sights to see and things to do in Sydney. The city is also quite diverse, and there is a fair distance between some of the great sights to take in, from the Sydney Harbour Bridge and the Opera House, to the stunning Blue Mountains on the very western fringe of the city.

We are going to start our broad tour of Sydney in the southwest at Camden, where John Macarthur brought the first

Merino sheep to be bred in Australia and now home to Jenny Thurling's Patchwork Mania.

A short drive from Camden is the township of Narellan, where Ingrid has recently relocated the premises of her store Pioneer Patchwork. Be inspired by this refreshed business. It is only another short drive then to our next stop, Sew Many Stitches in Campbelltown.

But we aren't finishing there. Why not carry on to Peg's Pieces at Kirrawee, where Bernadette and Ian cater for quilters and craft enthusiasts alike with their diverse range of fabrics and haberdashery. Busy Bee Cottage at Hurstville is next with its range of embroidery, wool and quilting supplies and Janome sewing machines.

On to the picturesque Northern Beaches now and a stop at Cottage Quilworks at Warriewood. Jann and Chris stock a beautiful range of fresh, fun fabrics.

We will start heading west now to Country Pickin's At The Corner in Dural. Robyn stocks a beautiful range of patterns, books, kits, gifts and, of course, patchwork fabrics!

On this tour we are also taking in the delightful townships of South Windsor (home to Patchwork Addiction), Richmond (home to Diane's Country Rose) and Londonderry (home to Fortunes and Fairies). Each one of these towns has its own sights to see and streets to explore to take your time!

Patchwork Mania

Location: Camden

Owner: Jenny Thurling

Best known for: Stocking a broad range of fabrics, Janome sewing machines and overlockers.

Tucked in the charming historical township of Camden, 60km from Sydney, you'll find Patchwork Mania, a store sure to please even the biggest patchwork fanatics. This store, owned and operated by Jenny Thurling, is bright and airy — a lovely place to spend an afternoon browsing or stocking up on supplies before heading to one of the nearby cafes for a coffee.



“Tucked in the charming historical township of Camden, 60km from Sydney, you'll find Patchwork Mania, a store sure to please even the biggest patchwork fanatics.”

Patchwork Mania carries a fabulous range of fabrics including civil war, 1930s reproductions, Japanese and novelty prints. The store also stocks Janome sewing machines and overlockers and runs a repair service for all brands of machines and overlockers. Along with tutors Kerrie, Sue Stott, Anne Somerlad and Lynne Alchin, Jenny runs a variety of classes in hand embroidery and patchwork. Patchwork Mania also offers a monthly machine embroidery club.

Local knowledge: “Patchwork Mania is in the Whiteman building, which, for many years, was run as a department store and has now been subdivided into three shops,” Jenny says.

address: 3/90-100 Argyle Street, Camden NSW 2570

ph: (02) 4655 4534

fax: (02) 4655 4204

email: patchworkmania@efel.net.au

website: www.patchworkmania.com.au



Star Garden quilt, pattern or kit, available from Patchwork Mania. Pattern \$15 plus postage, kit \$160 plus postage. Contact Patchwork Mania for details.

Pioneer Patchwork

Location: Narellan

Owner: Ingrid Krapez

Best known for: A lovely range of pretties and reproduction fabrics.

Pioneer Patchwork is owned and operated by Ingrid Krapez with the help of her talented staff members Kerry, Vicki, June and renowned designer Katrina Hadjimichael (who assists in the shop and runs some of the workshops). All of the team at Pioneer Patchwork are experienced patchworkers and Ingrid says they pride themselves in



their ability to solve even the trickiest patchworking problems.

“We like to think that if we specialise in anything it would be trying to help with anything you can throw at us,” Ingrid says.

“Be it a problem with your projects or helping to pick fabrics or projects, we are very willing to help with whatever we can.”

“We like to think that if we specialise in anything it would be trying to help with anything you can throw at us.”

This store stocks a lovely range of fabrics as well as a good selection of kits, giftware and Perle 8 embroidery threads. Pioneer Patchwork also holds a variety of wonderful workshops and special events, such as the annual Melbourne Cup day and visits from guest workshop tutors, and will soon be running an original BOM of their own design.



Local knowledge: “We are in Narellan, which is very close to historic Camden — a lovely country town with the most friendly and warm feeling,” Ingrid says.

address: 5/20 Somerset Ave, Narellan NSW 2567

ph: (02) 4647 3555

fax: (02) 4647 3599

email: pioneerpatchwork@westnet.com.au

Sew Many Stitches

Location: Campbelltown

Owner: Judy and John Rudd

Best known for: A great range of fabrics and sewing machines.

Judy Rudd has loved sewing for as long as she can remember so when a local sewing machine shop came up for sale four years ago, she seized the opportunity to turn her passion into a business. Judy expanded the store's range and introduced patchwork fabrics and now, Sew Many Stitches stocks the widest range of quilting fabrics in the Macarthur area.

Sew Many Stitches carries collections by Moda, Kaffe Fassett, Robyn Pandolph, Michael Miller, Jinny Beyer and many more. The store also continues to offer a great range of sewing machines from Janome, Brother and Bernina, as well as Horn cabinets.

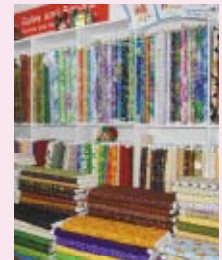


Friendly staff members Erica, Tina and Catherine are as passionate and energetic about their work as Judy, so when you're in this store you're guaranteed to have a good time. “Customers are

“Customers are greeted with lots of fabric, glorious quilts and projects and, usually, the sound of laughter coming from our class area.”

greeted with lots of fabric, glorious quilts and projects and, usually, the sound of laughter coming from our class area,” Judy says.

Sew Many Stitches runs classes in quilting, dressmaking and machine embroidery, so there is something for just about everyone!



Local knowledge: Judy says there are lots of interesting things to do and see in the Campbelltown area including the Mt Annan Botanical Gardens, the Campbelltown Art Gallery, the Japanese Gardens and the local historical buildings including the old St Patrick's School House, Menangle House and St Mary's Tower.

address: Shop 4, Level 2, 147 Queen Street, Campbelltown NSW 2560

ph/fax: (02) 4628 4437

Peg's Pieces

Location: Kirrawee

Owner: Bernadette and Ian Hoy

Best known for: Specialising in 100 per cent cotton fabrics, reasonable prices and a great range of buttons and trims.

Twenty-five kilometres south of Sydney's CBD we come to Kirrawee, home of the wonderful patchwork store Peg's Pieces. It has been in business for over 30 years and has been owned by husband-and-wife team Bernadette and Ian Hoy for the last four.

Peg's Pieces stocks a great selection of 100 per cent cotton fabric, dress fabrics, buttons, laces, ribbons, trims and wool. The store also carries Bernina sewing machines and accessories and offers a sewing machine repair service.

A range of classes is available from both local and guest instructors. "Our 'Anything Goes' classes are the

"Peg's Pieces stocks a great selection of 100 per cent cotton fabric, dress fabrics, buttons, laces, ribbons, trims and wool."

most popular; however, our new monthly class taught by Deborah Louie is sure to rival these in 2010," Bernadette says. A new Bernina club will also commence at Peg's Pieces in 2010, where students can learn about a variety of different techniques using their Bernina sewing machines.

Peg's Pieces holds an annual sale during the month of January and a mid-year sale in June or July, so if you're in the area at these times be sure to stop by for a bargain!

Local knowledge: "The Sutherland Shire is known for its beaches," Bernadette explains. "Kirrawee is just off the highway to Wollongong, so it is an easy stop on your trip."

address: 138 Oak Road, Kirrawee NSW 2232

ph: (02) 9542 3513

email: info@pegspieces.com.au

website: www.pegspieces.com.au



Busy Bee Cottage

Location: Hurstville

Owner: Beverly Barter

Best known for: Extensive knowledge in sewing and machines and fantastic classes.

Passionate crafter Beverly Barter first began sewing at just four years of age and has since worked in many aspect of the textiles industry — from millinery to teaching dressmaking at East Sydney Technical College and working for Elna. For the last 15 years Beverly has owned and operated her charming business, Busy Bee Cottage.

Set in a cosy little cottage, this store is a delightful place to stop for a browse and with its extensive range of stock you could easily spend many hours here! The front room of the cottage is dedicated to hand embroidery, crochet and knitting, while the back rooms are filled with scrumptious patchwork supplies and a space for classes.

"This store is a delightful place to stop for a browse and with its extensive range of stock you could easily spend many hours here!"

Busy Bee Cottage has five members of staff, each specialising in at least one area of patchwork, embroidery, knitting or machine embroidery. They all get a say in what products are stocked in the shop so the range is diverse and caters for all tastes.

Busy Bee Cottage also runs both group and private classes in patchwork (beginners to advanced), dressmaking, embroidery, Japanese hand quilting, basic mending skills, overlocking, knitting and crocheting, learning your machine, overlocker and both hand and machine embroidery.

Local knowledge: Busy Bee Cottage sponsors the end-of-year fashion parades at two local high schools. The store also donates a machine to each school for one talented student to win.

address: 40 Park Road, Hurstville NSW 2220

ph: (02) 9585 1544

email: bartersewing@gmail.com



New for 2010, Traditional Hand Quilting class taught by Michelle Huang. Course including six 2-hour classes \$120. Contact Busy Bee Cottage for details.

Cottage Quiltworks

Location: Warriewood

Owner: Jann Baker and Christine Lean

Best known for: Great classes with talented tutors.

Located on Sydney's picturesque Northern Beaches is Cottage Quiltworks, a must-visit shop that is sure to inspire. With more than 40 years of experience between them, owners Jann Baker and Christine Lean are passionate about quilting.

Chris loves modern designs and brights, whereas Jann prefers more scrappy, traditional creations. The store reflects the ladies' varied styles by catering for all tastes, with a diverse range of fabric including reproductions, Japanese prints, retros and brights, as well as linens, flannels and hand-dyed felted wools.

Cottage Quiltworks stocks collections by top designers such as Kaffe Fassett, Brandon Mably, Martha Negley, Philip Jacobs, Amy Butler, A Day in the Country, Yuwa, Anna Griffin and Moda and offers a great selection of classes with highly sought-after tutors. Karen Cunningham, Sue Ross, Sue Cody, Brigitte Giblin, Deb Louie, Lyn Alchin, Monica Poole and Sandy Caller teach a diverse range of classes, with everything from machine quilting basics to bag classes available.



“Located on Sydney’s picturesque Northern Beaches is Cottage Quiltworks, a must-visit shop that is sure to inspire.”

There's the added bonus of a great on-site café for refreshments and “husband entertainment”.

Local knowledge: During the winter Cottage Quiltworks run a week-long “Winter Escape” workshop that is well worth signing up for, whether you're a local or from interstate.

address: Building 4, Quattro Corporate,
4 Daydream Street, Warriewood NSW 2021

ph: (02) 9997 4661

fax: (02) 9940 0685

website: www.cottagequiltworks.com.au

Craft Depot

Location: Pennant Hills

Owner: Melissa and John Clegg

Best known for: Stocking Australia's largest range of quilting fabrics.

Crafters from near and far have long turned to Craft Depot at Pennant Hills for their supplies. Owners Melissa and John have been in business for 13 years and have managed to create a wonderland for stitchers in their store, with the largest range of patchwork fabrics in Australia.

The store has approximately 8000 bolts in stock as well as an incredible range of jelly rolls, books, gifts, haberdashery, wool, patterns and tools including rulers, boards, cutters and templates. Craft Depot also stocks Singer and Pfaff sewing machines.



On top of its extraordinary range, Craft Depot also runs a variety of classes in all aspects of quilting, taught by talented and well-known teachers. The staff at Craft Depot are friendly and knowledgeable and can

“Crafters from near and far have long turned to Craft Depot at Pennant Hills for their supplies.”

assist with just about anything — whether it's craft, knitting, embroidery or quilting.

If you are a bargain hunter then it is well worth stopping by during Craft Depot's

twice-yearly sales, where all quilting fabrics, as well as a great range of other items, are greatly reduced.

Local knowledge: Craft Depot is situated alongside the Pennant Hills Railway Station and has unlimited parking adjacent to the shop, making it easily accessible no matter how you choose to travel there.

address: 2 Railway Street, Pennant Hills NSW 2120

ph: (02) 9980 8966

fax: (02) 9980 9497

email: mailorders@craftdepot.com.au

website: www.craftdepot.com.au



Country Pickin's At The Corner

Location: Dural

Owner: Robyen Gibney

Best known for: Friendly service and a great variety of fabrics.

Located 35km northwest of the Sydney CBD we come to the township of Dural, a lovely rural escape just a short



drive from the city. Dural is a great spot to visit and well worth the drive, especially for patchworkers, who will find the local quilting store, Country Pickin's At The Corner, simply irresistible. Owned by Robyen Gibney, Country Pickin's At the Corner is a cosy shop filled with happy faces, beautiful quilts, a wonderful range of fabrics and a cute selection of knick knacks.

“Country Pickin's At The Corner specialises in classes and workshops taught by industry experts.”

Country Pickin's At The Corner specialises in classes and workshops taught by industry experts. Regular teachers in the store include Lyn Bertram, Amanda Daly, Vanessa Thomas, Tita Leach, Katrina Hadjimichael and Margaret Cormack. In 2010 the store has Monica Poole, Kim Bradley, Deborah Louie and Carol Roberts all booked to teach workshops. Classes are available for all skill levels.



Country Pickin's At The Corner also provides quilting services with a number of local longarm quilters regularly picking up and dropping off projects at the shop.

Local knowledge: “We are on the fringe of the city where there are many local nurseries including Swanes and Hargraves,” Robyen says. “The Arcadian Quilters have their annual quilt show at Swanes Nursery on the Mother's Day weekend.”

address: Q North Business Centre, 9/829 Old Northern Road, Dural NSW 2158 (entry via Quarry Road)

ph: (02) 9651 7201

email: info@countrypickins.com.au

website: www.countrypickins.com.au

Patchwork Addiction

Location: South Windsor

Owner: Libby and Don Shewry

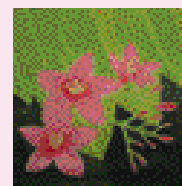
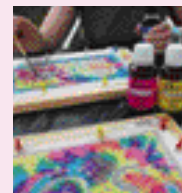
Best known for: Silk painting classes and Don's original stitchery and appliqué designs.

Patchwork Addiction is situated about an hour from Sydney in the Hawkesbury, a beautiful area perfect for a weekend getaway. This store carries a great range of Singer sewing machines and patchwork supplies. Don specialises in creating beautiful, unique landscape stitchery and appliqué designs so the range of landscape fabrics available at Patchwork Addiction is particularly amazing.

At Patchwork Addiction a great range of classes is available including Don's landscape with fabric, as well as drawing with thread, embroidery (including hardanger), stitchery quilts, paper piecing, fabric soft toys, beginner to advanced patchwork and quilting, and quilt-as-you-go

classes. Don teaches and is joined by six other tutors — Jeanette Gotts, Julie Thomas, Carole Pfeiffer, Nancey Aitkin, Sue Meyhew and Bev Phillips.

Patchwork Addiction also offers unique silk painting classes and stocks silk painting supplies. Their silk painting classes run from 10am until 1pm on Tuesdays or can be booked, at any time, for groups of three or more. Silk painting can be incorporated into quilting for beautiful results, so if you are after a new way to personalise your patchwork, this class is definitely worth a try!



Local knowledge: “The Hawkesbury is home to many world-renowned artists and crafters, as well as many historical buildings,” Libby says. “Take a historic tour of the area or the Saturday night ghost tour.”

address: Shop 1-3 Mullingers Arcade, 485 George Street, South Windsor NSW 2756

ph: (02) 4577 2490

fax: (02) 4577 2438

email: patchworkaddiction@bigpond.com

website: www.patchworkaddiction.com.au

“Patchwork Addiction is nestled about an hour from Sydney in the Hawkesbury, a beautiful area perfect for a weekend getaway.”

Diane's Country Rose

Location: Richmond

Owner: Diane

Best known for: Being a one-stop-shop for all your quilting supplies.

Since Diane first opened her store 20 years ago, Diane's Country Rose has gone from strength to strength and expanded to become a "patchwork heaven".

Specialising in patchwork and quilting, Diane's Country Rose carries a fabulous range of fabrics, books, patterns and kits. A terrific selection of DMC embroidery threads, Mettler threads, Madeira threads, Gütermann threads, buttons, ribbons, haberdashery, tools by Clover and quilting stencils are also available.

Diane's Country Rose runs a great range of patchwork classes taught by Bev Barnes and machine quilting workshops with Deborah Louie.

The store is a popular spot for local quilters to gather, but even if it's too far for you to visit in person, you can still have access to the store's fabulous range online.

Diane's Country Rose has an easy-to-use website at www.dianescountryrose.com, where you can browse and purchase their wonderful stock from the comfort of your home. Diane's Country Rose offers affordable postage and

“Specialising in patchwork and quilting, Diane's Country Rose carries a fabulous range of fabrics, books, patterns and kits.”

will happily ship internationally upon request. All orders are posted out within five days of purchase.

Local knowledge: Having been first settled in 1794, Richmond is an historical area, so while you are there be sure to visit the Hawkesbury Museum and Tourist Centre, where you'll find maps, displays of Aboriginal artifacts and chronicles of the European settlement of the area.

address: 120A Francis Street, Richmond NSW 2753

ph: (02) 4578 3094

fax: (02) 4578 6304

website: www.dianescountryrose.com

Fortunes and Fairies

Location: Richmond

Owner: Leanne

Best known for: An extensive range of Yuwa and Mary Rose fabrics along with flannel and chenille.

Leanne has been in business for almost a decade and although it was originally a gift store with only general craft supplies, she has gradually added fabrics and more to the stock list.

With 180 square metres of space in the shop, you will want to spend hours among the beautiful assortment of fabrics, giftware, wool, haberdashery and more. There are more than 4000 bolts of fabrics, so there is a variety for every style of project. At Fortunes and Fairies you will find Civil War, William Morris, Moda, Yuwa, Lecien and Quilt Gate as well as oriental and novelty designs and a large range of cotton and flannel backings.

"We also stock Husqvarna and Brother sewing machines, including QBOT, the automated quilter,"

“We have experienced staff offering lessons and service for all customers who purchase our machines.”

says Leanne. "We have experienced staff offering lessons and service for all customers who purchase our machines."

Whether you want to learn machine embroidery, patchwork or even just quilt-as-you-go in a group, there are classes to suit everyone. Contact the store for a list of times.

Local knowledge: The Richmond community centres around Richmond

Park and with its green village atmosphere and heritage buildings, you will feel like you have stepped back in time. Many early settlers were buried in St Peters Cemetery, which dates back to 1811.

address: Shop 8 Magnolia Mall, 285-289 Windsor Street, Richmond NSW 2753

ph: (02) 4578 1650

email: fortunesandfairies@bigpond.com

website: www.fortunesandfairies.com



Two Way Traffic kids' quilt, available in kit form (\$75). Contact Fortunes and Fairies for more information.