

Materials

3.3m (3 $\frac{3}{8}$ yd) light marbled background fabric
3.3m (3 $\frac{3}{8}$ yd) black tone-on-tone print fabric
3.3m (3 $\frac{3}{8}$ yd) white tone-on-tone print fabric
3.3m (3 $\frac{3}{8}$ yd) backing fabric
Batting at least 160cm x 180cm (63in x 71in)
3m (3 $\frac{1}{4}$ yd) of 90cm (36in) wide fusible web
Beige or grey cotton thread for piecing and for the bobbin if machine appliquéing, see note
Black and white machine-embroidery threads for machine appliqué or black and white stranded embroidery threads for hand appliqué
Black and white threads to match fabrics for quilting
288 Swarovski crystals for flower centres, optional
6.5m (7 $\frac{1}{8}$ yd) sequined braid, optional
Size 10 sharp needle for machine appliqué
Crewel needles for hand appliqué
Small, sharp-pointed scissors
Pencil and sharpener
Light-coloured chalk marking pencil, see note
Open-toed appliqué foot for machine appliqué
Free-motion and walking feet for machine quilting
Rotary cutter, ruler and mat

Note: The appliqué in this project can be completed by hand or machine.

Michele uses The Bottom Line threads from Superior Threads as they are lint-free and of similar weight to machine embroidery threads, so the result is a perfect appliqué stitch.

A white chalk marking pencil can be used on the black fabric; however, another light-coloured pencil is required to mark the white fabric. Test pencils on scraps of fabric to ensure the marks can be removed easily.

Cut the fabric

Remove the selvedges and from each of the black and the white tone-on-tone fabric, cut:

- 1 rectangle, 32 $\frac{1}{2}$ in x 56 $\frac{1}{2}$ in
- 4 strips, 2 $\frac{1}{4}$ in x width of fabric (binding)

Prepare the background

1. The whole background of the quilt is prepared before the appliqué is added.
2. Following Diagram 1, join the rectangles of black and white fabrics with a $\frac{1}{4}$ in seam allowance and press the seam allowance open.

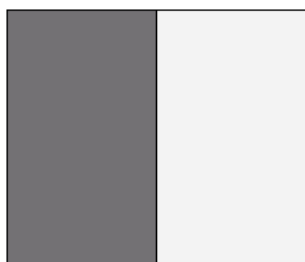


Diagram 1

Prepare the appliqué

1. The appliqué design is printed on the Pattern Sheet. The design has three sections: A, B and C, and two flowers. Each side of the quilt contains 12 designs, two of them cut down the centre and appliquéed at the sides.
2. Working on one design and one fabric at a time, trace and prepare 12 black designs and then trace and prepare 12 white designs.
3. Using a pencil, trace the appliqué shapes from the Pattern Sheet onto the paper side of fusible web leaving at least $\frac{1}{2}$ in between the shapes. To use the fusible web economically, do not spread the designs too far apart.
4. Roughly cut around each shape and, using a hot, dry iron, fuse to the wrong side of the fabrics.
5. Cut out the shapes on the line with small, sharp-pointed scissors. Cut the centres from the flowers.

Place the appliqué

1. If desired, the appliqué shapes could be arranged and fused to the background by placing the background fabric over a folded, thick, woollen blanket on the floor. Take care that the heat does not affect the floor surface and that the iron is in a safe position away from children.
2. To assist with placement of the appliqué shapes, following Diagram 2 and the photograph of the quilt, use a chalk marking pencil to rule lines across the background panels 18in and 42in from the top edge of the quilt and down the centre of each side of the quilt.
3. The designs are arranged in four rows and Rows 2 and 4 have half designs at either side.
4. Arrange each set of shapes on the background fabric, noting the arrow direction in the designs. Do not spread the shapes too far apart, they should be almost touching. The bottom point of the designs in Row 1 should be approximately 18in from the top of the quilt and the bottom point of the designs in Row 3 should be approximately 42in from the top of the quilt. The centre of designs in Rows 1 and 3 should be placed over the vertical centre lines and designs in Rows 2 and 4 should be placed evenly on either side of the line.

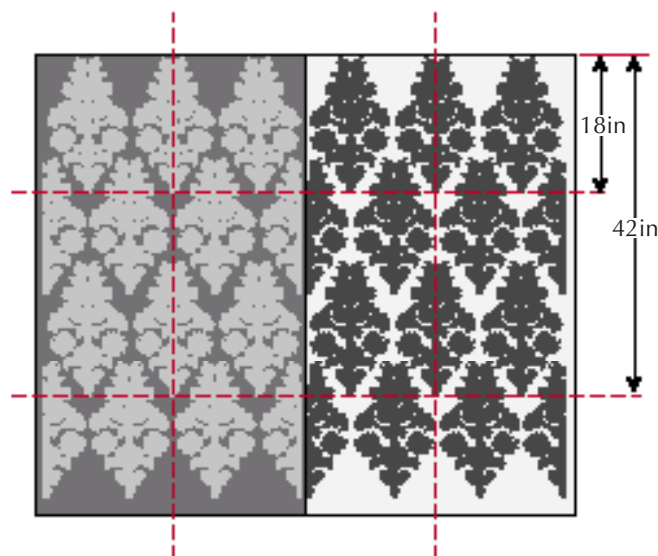


Diagram 2